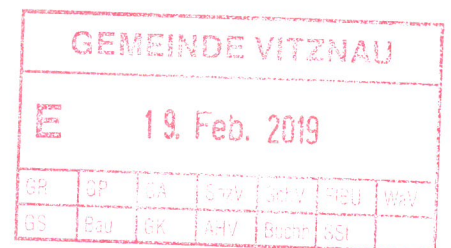


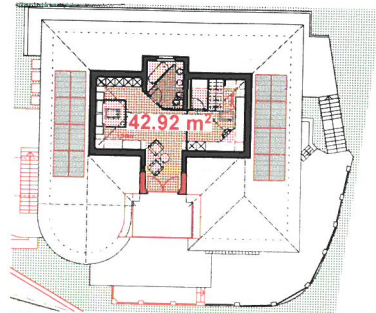
berechnungen aGF

19.02.2019

Energetische Sanierung mit Erweiterung Einstellhalle

Ausnützung AZ		0.22
aGF _{PRJ}		209,28 m ²
aGF _{ZUL}	aLF x AZ _{ZUL} = 954,27 x 0.30	286,28 m ²
Reserve	aGF _{ZUL} - aGF _{PRJ}	+ 77,00 m ²

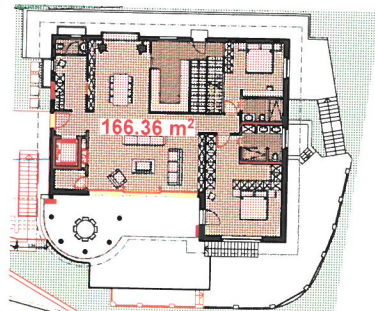




DACHGESCHOSS

42,92 m²

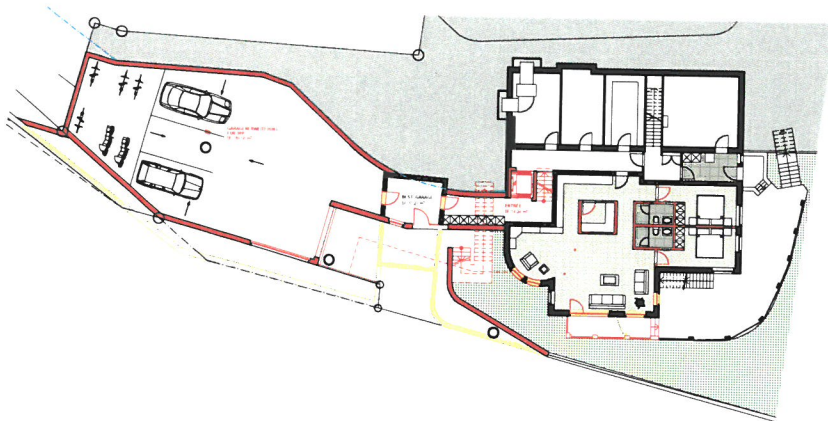
DACHGESCHOSS 1:500



ERDGESCHOSS

166,36 m²

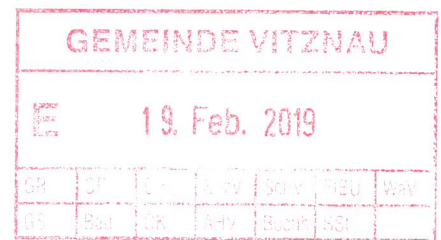
ERDGESCHOSS 1:500



UNTERGESCHOSS

00,00 m²

UNTERGESCHOSS 1:500



Total anrechenbare Geschossfläche

209,28 m²

sf/c